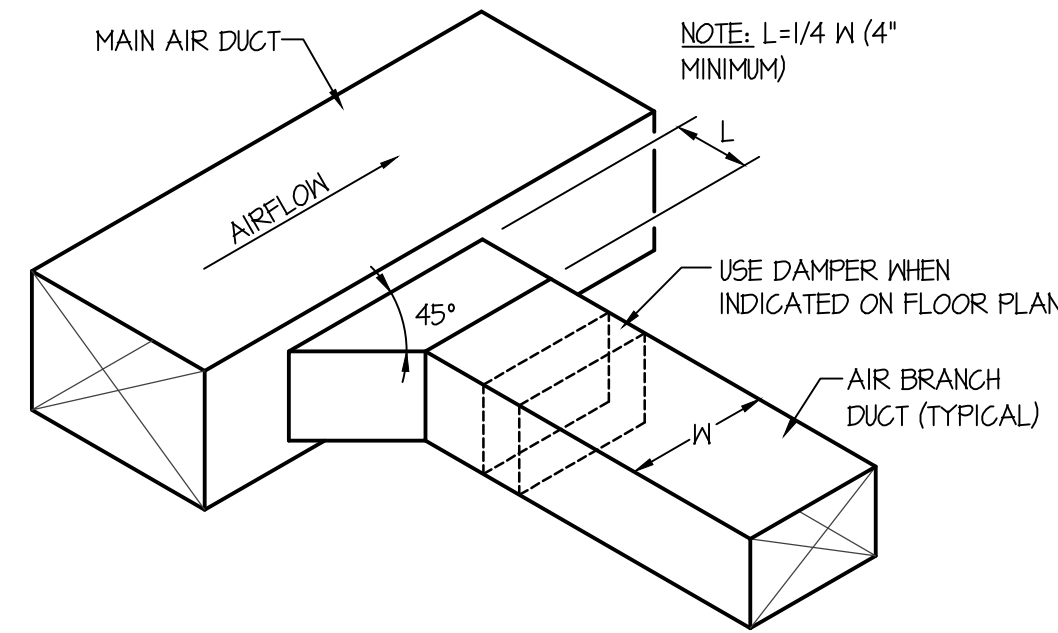
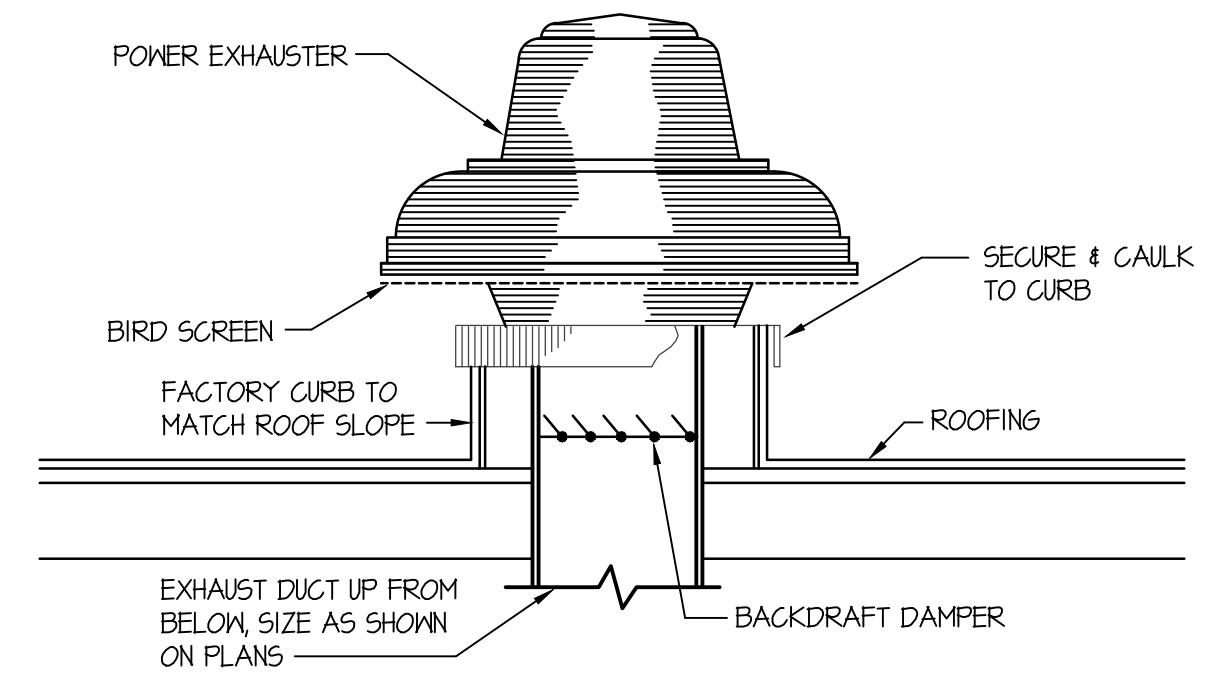


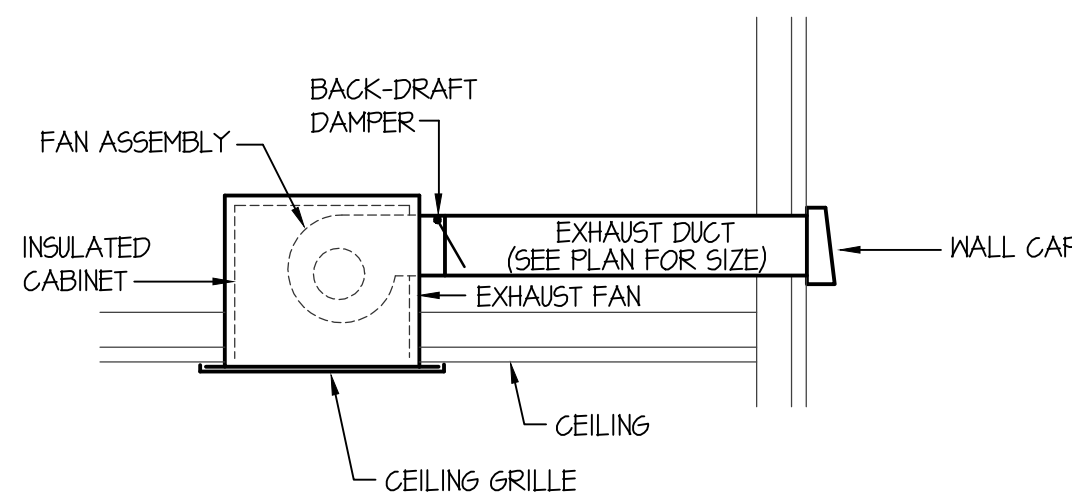
**CEILING DIFFUSER DETAIL WITH FLEXIBLE DUCT**  
NO SCALE



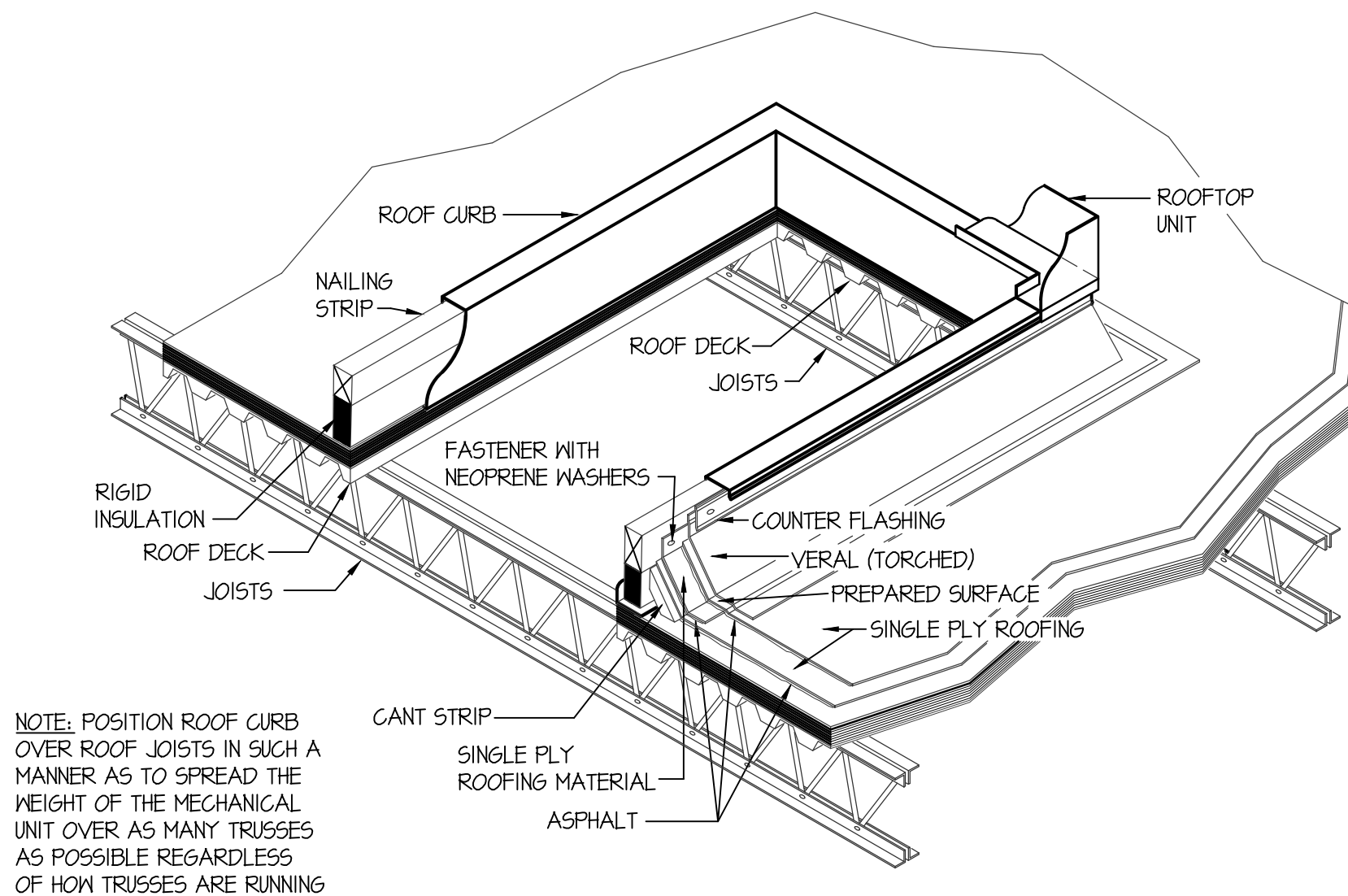
**RECTANGULAR DUCT CONNECTION DETAIL**  
NO SCALE



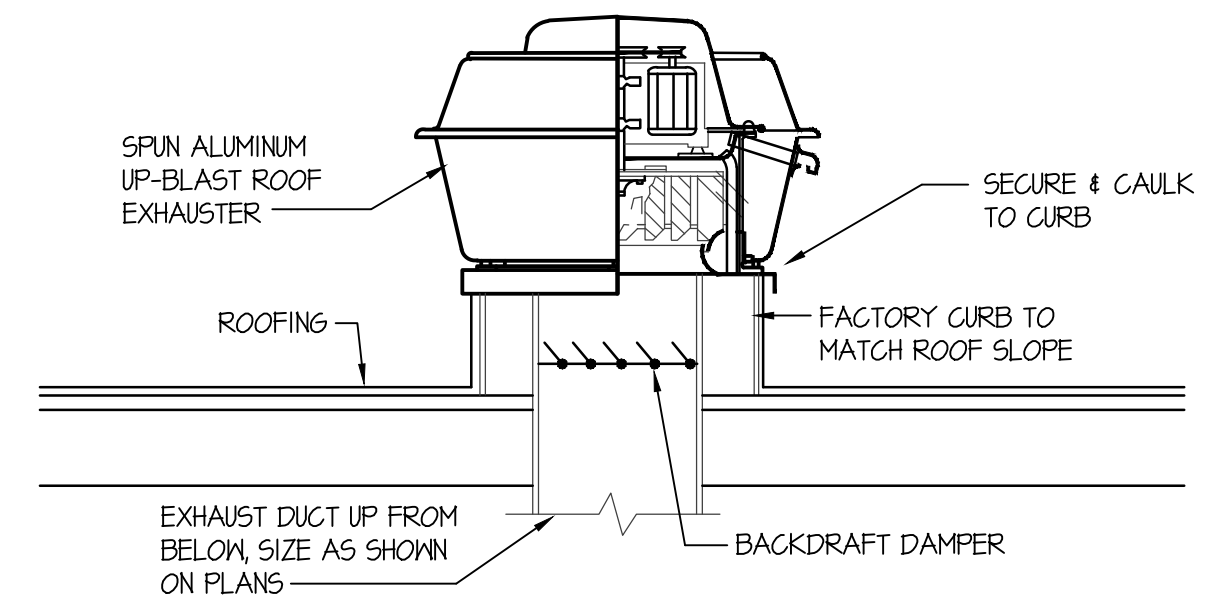
**ROOF TOP EXHAUST FAN DETAIL**  
NO SCALE



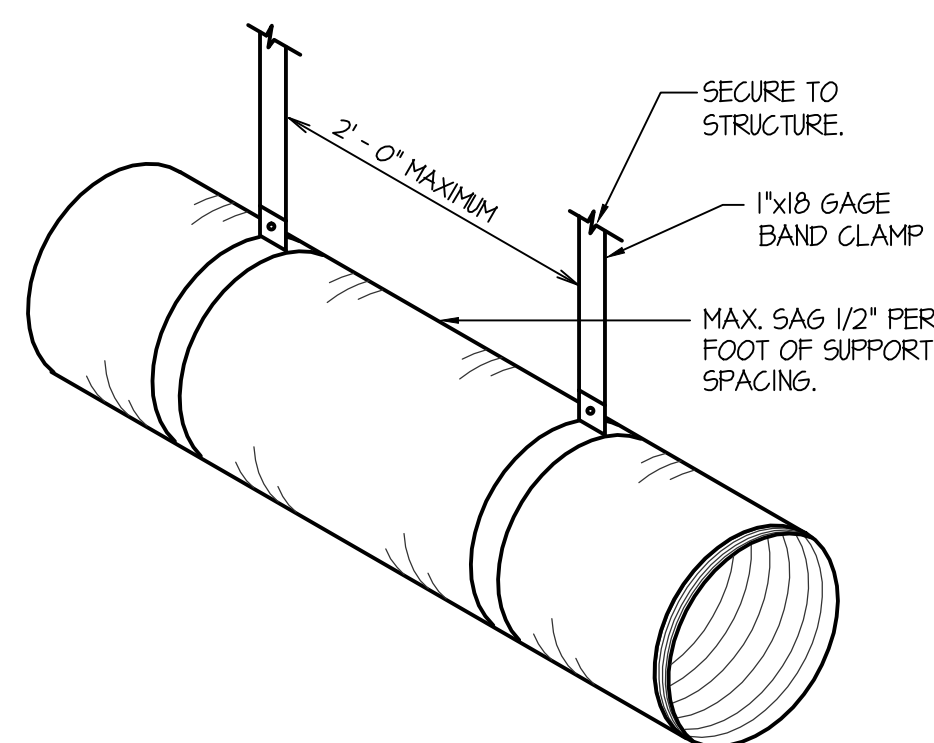
**CEILING MOUNTED EXHAUST FAN DETAIL**  
NO SCALE



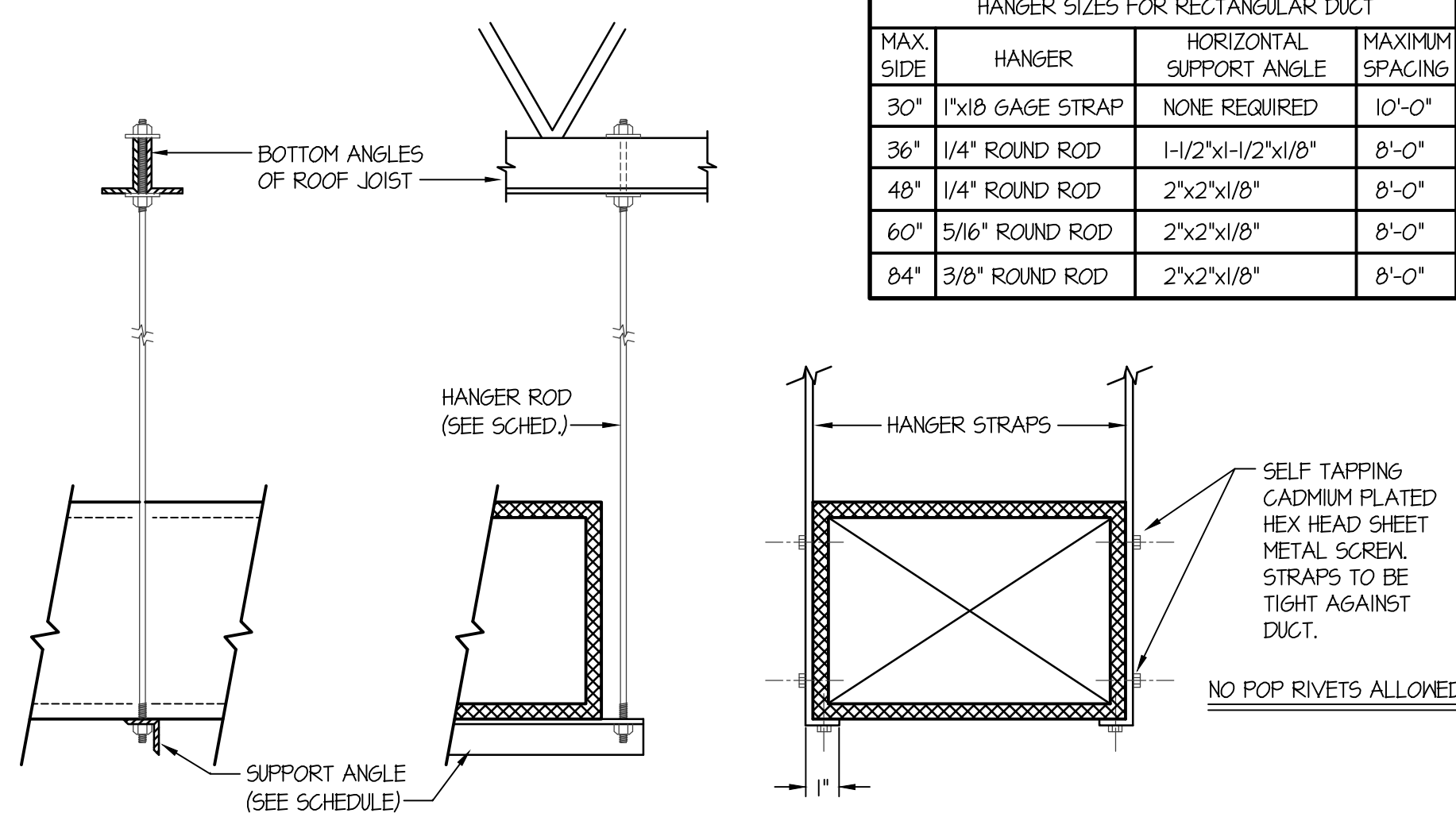
**TYPICAL ROOFTOP MOUNTING DETAIL**  
NO SCALE



**ROOF TOP EXHAUST FAN DETAIL**  
NO SCALE



**FLEXIBLE DUCT SUPPORT DETAIL**  
NO SCALE



**DUCT STRAP HANGER DETAIL**  
NO SCALE

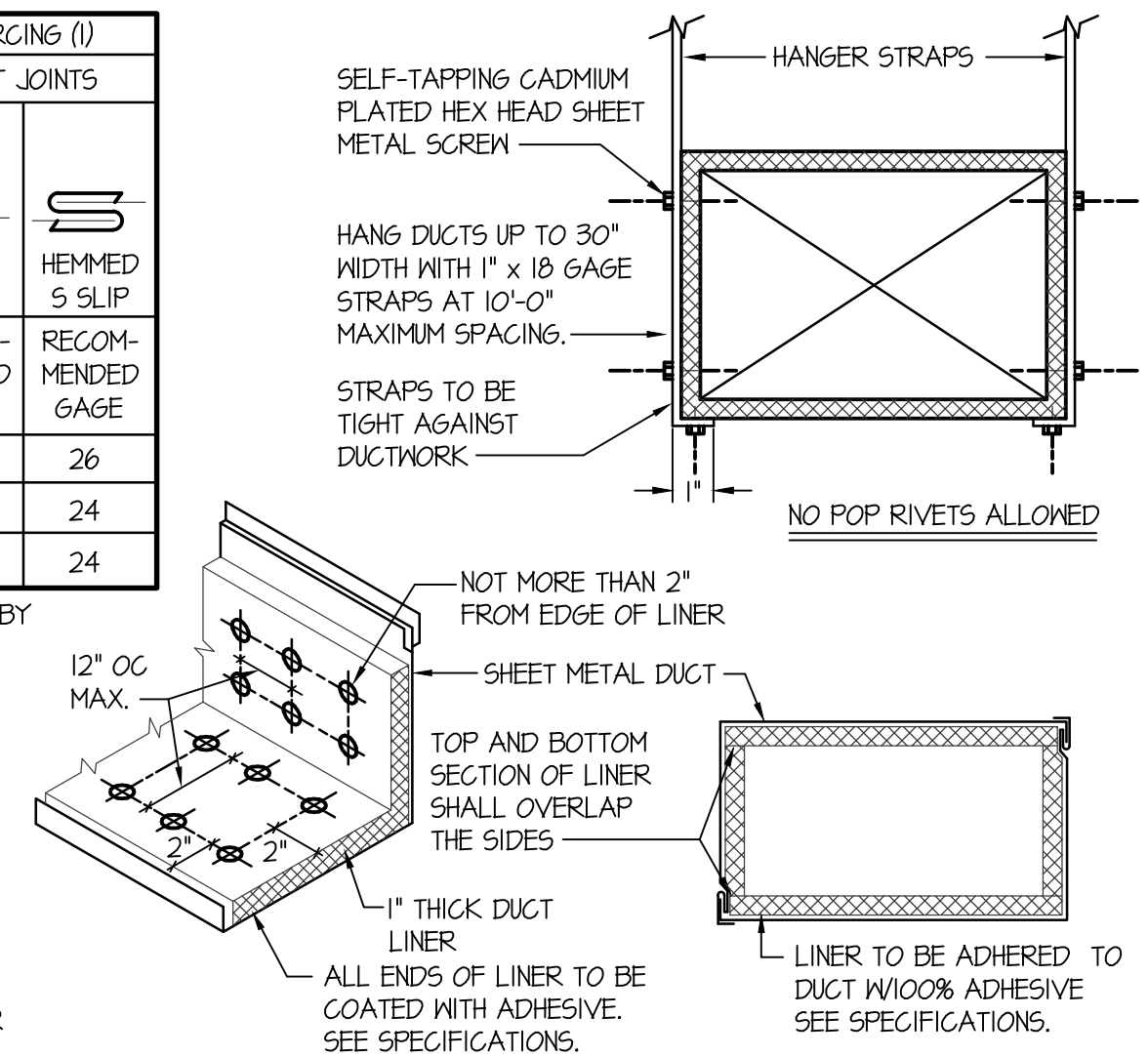
DIMENSION OF LONGEST SIDE, INCHES	SHEET METAL GAGE (ALL FOUR SIDES)	TRANSVERSE REINFORCING (1)			
		MINIMUM REINFORCING ANGLE SIZE AND MAXIMUM LONGITUDINAL SPACING BETWEEN TRANSVERSE JOINTS &/OR INTERMEDIATE REINFORCING	AT JOINTS		
			DRIVE SLIP	HEMMED S SLIP	
UP THRU 12	26	NONE REQUIRED	26	26	
13 - 18	24	NONE REQUIRED	24	24	
19 - 30	24	1"x1/8" @ 60 IN	-	24	

(1) TRANSVERSE REINFORCING SIZE IS DETERMINED BY DIMENSION OF SIDE TO WHICH ANGLE IS APPLIED.

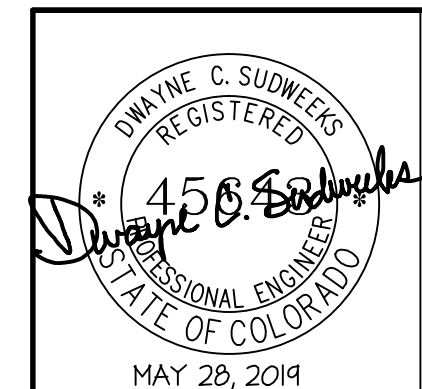
METAL FASTENERS - O MARK INSULPING, DURO DYNE FASTENERS OR GRIPNAILS.

GRIP NAILS SHALL BE INSTALLED BY GRIPNAIL AIR HAMMER OR BY AUTOMATIC FASTENER EQUIP.

ENDS OF LINER SHALL BE BUTTED FIRMLY TOGETHER



**DUCT CONSTRUCTION AND HANGER DETAIL**  
NO SCALE



**Engineered Systems Associates**  
1355 EAST CENTER  
POCATELLO, IDAHO 83201  
PHONE: (208) 233-0501  
FAX: (208) 233-0529  
EMAIL: esa@engsystems.com  
ESA JOB NUMBER: 15130



SEAL:

REV. DATE DESCRIPTION

PROJECT: A NEW BUILDING FOR:  
**IGLESIA DE JESUCRISTO PALABRA MIEL**  
2504 F AVENUE  
MEAD, CO 80542  
MOUNTAIN WEST ARCHITECTS | 543 25TH ST. - OGDEN, UT 84401 | PH: 801-388-6052 | www.mountainwestarchitects.com

SHEET TITLE:

**MECHANICAL DETAILS**

SHEET NUMBER:

**M300**

DO NOT SCALE DRAWING